



**XEROX®**

# **Xerox Scanner Advantage**

**10** Reasons to Make Xerox  
Scanners Your Choice for  
Document Capture

# 1 The Brand You Know and Trust

# XEROX®



## Xerox

Xerox is the \$15.7 billion technology and services enterprise that helps businesses deploy Smarter Document Management™ strategies and find better ways to work.

**A new way to look at Xerox.** Xerox understands your document-related needs and uses smart documents and smart processes to help your business in ways that just might surprise you.

## 2

# Awards



*“Visioneer’s commitment to bring simplicity and accuracy to the scanning experience is proven again through the integration of its OneTouch technology with Kofax VRS image enhancement. The combination of these technologies makes high quality scanning both easy and fool-proof, providing a compelling argument for any end user.”*

*- Susan Moyse,  
Moyse Consulting Group, January, 2007*



**DocuMate 252**  
*AIIM Best of Show*  
March, 2004



**DocuMate 252**  
*Best of RetailVision*  
April, 2004



**DocuMate 252**  
*Editor's Choice*  
September, 2004



**DocuMate 262**  
*Editor's Choice*  
March, 2005



**DocuMate 272**  
*AIIM Best of Show*  
May, 2005

**DocuMate 632**  
**Patriot 470, 680, 780**  
August, 2006

**DocuMate 152**  
July, 2006

## 3

# High Growth in Workgroup & Departmental Segments

Category	Speed Range	Price Range	2004 Avg List Price	2004 Units Shipped (000)	2004 Sales (\$ M)	2009 Sales (\$M)	Revenue CAGR 2004-2009
WorkGroup	10-25 ppm	\$500 - \$2K	\$970	148	\$157	\$620	32%
Departmental	26 - 40 ppm	\$2 - \$5K	\$3,380	30	\$116	\$275	19%
Low-Volume Production	41 - 60 ppm	\$5 - \$12K	\$8,140	21	\$173	\$245	7%
Med-Volume Production	61 - 90 ppm	\$12 - \$30K	\$24,190	3.0	\$77	\$64	-4%
High-Volume Production	>90 ppm	>\$30K	\$67,380	1.0	\$66	\$50	-5%
Total				203	\$589	\$1,254	

# Document Imaging Trends

- Growth in document imaging is the desktop and departmental levels
- 70% of WG scanners are compact sheetfed scanners
- Documents are being captured where they are first encountered – at the desktop.
- Ease-of-Use is the most important feature for desktop and department scanning solutions.
- Visioneer OneTouch™ technology has made Xerox DocuMate scanners the most recognized brand for ease of use.

## 4

# One Touch Ease of Use



## One Touch Functionality & Toolkit

Processes such as scan-to-email can be done with one button. This typically requires as many as 14 steps with other scanners. Imagine, from paper to an attached PDF in an email message in one step.

With the One Touch Toolkit SDK, ISVs can write their own One Touch links. Links for workflows such as DocuShare are already available. More links are on the way.



 **ONETOUCH™** Destinations 

- Xerox DocuShare
- Documentum
- Kofax VRS/VRS Pro
- Kofax Ascent Capture
- MS Word
- MS Outlook
- MS Excel
- MS Powerpoint
- Nuance PaperPort
- Nuance OmniPage
- Adobe Photoshop
- Adobe Acrobat AOL
- Wordpad
- MS Paint
- Notepad
- Internet Explorer
- Any Fax Device or Server
- Any Local or Network Printer
- Any Local or Network Folder
- Any Still image client
- CD/DVD Removable Storage

# OneTouch Scan-to-Print

- One button sends document to any Xerox printer, local or networked
- Leverage all Xerox printer driver features
- One Touch Convenience



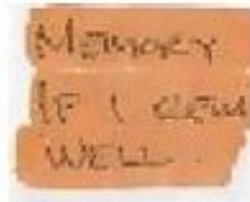
# 5 OneTouch with VRS technology



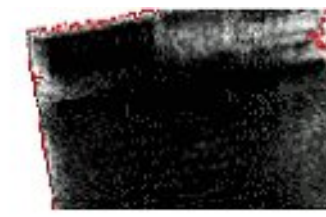
## VRS with One Button

Xerox DocuMate scanners integrate VRS directly into the OneTouch driver, making VRS as simple to use as pressing a button

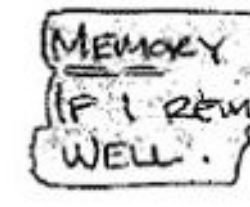
Original



Without VRS



With VRS



# 6

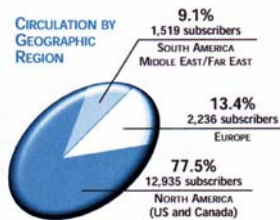
# One Touch Scan to Searchable PDF

## Rates/Specifications

With our magazine targeted circulation to decision-makers throughout the global bulk liquid storage community, your advertising budget is focused specifically on your current and potential customers. Combine this with a very competitive rate structure, unparalleled editorial content and targeted bonus distribution and it's easy to see why our magazine is your first choice for advertising.

### GROSS ADVERTISING RATES

	1X	2X
Full Page	\$4,550	\$4,290
2/3 Page	\$3,550	\$3,350
1/2 Page	\$2,950	\$2,790
1/3 Page	\$1,950	\$1,840
1/4 Page	\$1,680	\$1,585
<b>COVERS</b>	<b>1X</b>	<b>2X</b>
Inside Front	\$5,495	\$5,295
Inside Back	\$5,395	\$5,100
Outside Back	\$5,495	\$5,295



### MECHANICAL DATA

**PUBLICATION SIZE:** 8 1/8" x 10 7/8" allow 1/4" width for final trim and gutter for live text, heading, etc. Type page size is either two columns, each 2 1/4" wide by 9 1/16" deep or two columns, each 3 1/16" wide by 9 1/16" deep. Alignment not guaranteed on facing page spreads of type design. Precision folding of all copies not guaranteed.

**PAPER STOCK:** 80 lb. gloss coated offset paper, 60 lb. coated offset body

**METHOD OF PRINTING:** Web Offset

**TYPE OF BINDING:** Saddle stitched

### MATERIAL SPECIFICATIONS

To qualify for standard agency commissions, film and color proof must be provided. Other media will receive only 50% of standard agency commission.

**4-COLOR ADS:** CMYK plus a proof.

**STANDARD SECOND COLOR:** Standard second colors (red, blue, green, yellow) will be built from process colors. PMS equivalents are given for reference only. When matched colors are submitted as a second color, we will use the closest standard color.

**MATCHED COLOR:** When PMS or other matched colors are specified, they will be built from process colors. If a color requires running a PMS color, see your representative for the color ad rates.

**PHOTOREPRODUCTION:** Color or Black/White Ads: 133- or 150 line screen, right-reading emission down negatives. For color ads, provide color proof.

**NON-PAGE READY ART:** There is a \$75 minimum production charge when film is not submitted by the advertiser. Additional time is also required, so materials should be submitted at the time space reservations are made. Your sales representative will provide specific quotes on ad production charges.

**IN-HOUSE PRODUCTION:** The advertiser must submit copy, preferably on Macintosh formatted disk, plus high resolution logo, photos, or slides. If images are provided scanned for placement, halftone images should be 266 lpi or higher at 100% or reproduction size. Line art should be scanned at 1200 dpi at 100%.

**OTHER MEDIA:** All ads are accepted in the following formats and converted to film for the printer at an additional charge to the advertiser.

**Specifications—Quark XPress files:** 12 pt. font size at work, scans, logos, and all fonts: off or eps formats, 133 line or 1200 dpi resolution. Adobe Illustrator is also acceptable. Media—100 mb Zip, 1.2 Gb Jaz, CD-ROM. Advertisers should provide film when other programs are used.

**HAIRY COPY:** Velox, PMT: Screen no tighter than 100 lpi. Camera-ready film must be made from hard copy at an additional charge.

**STORAGE OF ADVERTISING MATERIALS:** 12 months and then destroyed unless otherwise instructed in writing.

### ADVERTISING SPECIFICATIONS

Size	Pages (width x height)
2-Page Spread (five area)	15.5 x 10
2-Page (bleed)	16.5 x 11.125
1-Page (live area)	7.5 x 10
1-Page (bleed)	8.375 x 11.125
2/3 Page Vertical	4.5 x 10
1/2 Page Spread (live area)	15.5 x 4.875
1/2 Page Spread (bleed)	16.5 x 5
1/2 Horizontal	4.5 x 7.5
1/2 Vertical	7 x 4.875
1/3 Vertical	2.25 x 10
1/3 Square	4.5 x 4.875
1/4 Horizontal	7 x 2.375
1/4 Vertical	3.375 x 4.875

## Search PDF by Content

If you're not searching scanned documents by content, you might as well be looking at paper. Image over text PDF preserves the integrity of the document while making all the text available to you to search or select/copy.

**MECHANICAL DATA**

**PUBLICATION SIZE:** 8 1/8" x 10 7/8"; allow 1/4" width for text, heading, etc. Type page size is either two columns, each 2 1/4" wide by 9 1/16" deep, or two columns, each 3 1/16" wide by 9 1/16" deep. Alignment not guaranteed on facing page spreads of type design. Precision folding of all copies not guaranteed.

**PAPER STOCK:** 80-lb. gloss-coated offset cover

CALL TODAY TO RESERVE YOUR SPACE

## 7

# Fast Duplex Scanning



## Both Sides Now

Many scanners cut their speed by half or more when scanning both sides. Not so here. DocuMate scanners capture both sides at the same time at rated speed. So you get twice as many sides in the same amount of time.

## 8

# ID Card Scanning



## Two Scanners in One

The Xerox DocuMate 272 can scan paper documents or ID Cards (embossed or smooth).

Especially useful in **healthcare** and **financial services** markets.

# SCAN THIS



9

# TWAIN & Certified-ISIS Drivers



**TWAIN**  
*Linking Images With Applications*



## Drivers That Mean Compatibility

At times, a scanner is only as good as its drivers. Xerox now delivers the best-in-class TWAIN drivers. Along with our partner Pixel, we also deliver certified-ISIS drivers. Together, these drivers assure compatibility with hundreds of imaging applications.

## 10

# Support & Warranty Options



## The Sale Doesn't End on Delivery

World class Support and Service for Xerox Scanners is a phone call away. Or simply use our scanners Knowledgebase. You can choose from economical depot warranty service, 2 and 3-year enhanced programs with overnight ship-ahead replacement or 4-hour on-site service.

# Meeting Your Scanning Needs

## Workgroup

Up to 25 ppm / 50 ipm

**DocuMate 152**  
**DocuMate 250**  
**DocuMate 252**  
**DocuMate 510**  
**DocuMate 520**

## Departmental

26-40 ppm / 80 ipm

**DocuMate 262**  
**DocuMate 272**  
**DocuMate 632**

## Low-Volume Production

40+ ppm / 80 ipm

**DocuMate 752**

# XEROX SCANNERS



## SHEETFED SCANNERS

## ADF/FLATBED SCANNERS

**DocuMate 272      DocuMate 262      DocuMate 252      DocuMate 250      DocuMate 152      DocuMate 752      DocuMate 632      DocuMate 520      DocuMate 510**

	DocuMate 272	DocuMate 262	DocuMate 252	DocuMate 250	DocuMate 152	DocuMate 752	DocuMate 632	DocuMate 520	DocuMate 510
Part Number	XDM2725D-WU	XDM2625D-WU	XDM2525D-WU	XDM2505D-WU	XDM1525D-WU	XDM7525D-WU	XDM6325D-WU	XDM5205D-WU	XDM5105D-WU
Part Number with Kofax VRS Pro	-	-	-	-	-	XDM7525D-WU/VP	XDM6325D-WU/VP	-	-
List Price	\$1,295	\$1,195	\$895	\$795	\$595	\$4,995	\$1,995	\$999	\$349
List Price with Kofax VRS Pro	-	-	-	-	-	\$5,995	\$2,295	-	-
Simplex/Duplex Scanning	Duplex	Duplex	Duplex	Simplex	Duplex	Duplex	Duplex	Simplex	Simplex
ppm / ipm (@ 200 dpi blk & wht)	33 ppm / 66 ipm	33 ppm / 66 ipm	25 ppm / 50 ipm	22 ppm	15 ppm / 30 ipm	50 ppm / 100 ipm	40 ppm / 80 ipm	20 ppm	10 ppm
ppm / ipm (@ 150 dpi color)	33 ppm / 42 ipm	33 ppm / 42 ipm	24 ppm / 40 ipm	17 ppm	15 ppm / 30 ipm	50 ppm / 100 ipm	40 ppm / 60 ipm	16 ppm	4 ppm
One Touch Scanning	YES	YES	YES	YES	YES	YES	YES	YES	NO
Kofax VRS Certified	YES	YES	YES	YES	NO	YES	YES	YES	NO
TWAIN & ISIS Certified Driver	YES	YES	YES	YES	TWAIN	YES	YES	YES	TWAIN
Interface	USB 2.0	USB 2.0	USB 2.0	USB 2.0	USB 2.0	USB 2.0	USB 2.0	USB 2.0	USB 2.0
ADF Capacity (pages)*	50	50	50	50	50	120**	100**	50	50
Resolution	600 dpi	600 dpi	600 dpi	600 dpi	600 dpi	600 dpi	600 dpi	600 dpi	600 dpi
Paper Size (min)	2" x 3.5"	2" x 3.5"	2" x 3.5"	4" x 2.5"	2" x 3.5"	4" x 4.5"	4.6" x 5.6"	4.6" x 5.6"	4.6" x 5.6"
Paper Size (max)	8.5" x 14"	8.5" x 14"	8.5" x 14"	8.5" x 14"	8.5" x 14"	11.7" x 17"	8.5" x 14"	8.5" x 14"	8.5" x 14"
Scans Embossed ID Cards	YES	NO	NO	NO	NO	On Flatbed	On Flatbed	On Flatbed	On Flatbed
Color Bit Depth	48	48	48	48	48	48	48	48	42
Size (footprint)	6" x 13"	6" x 13"	6" x 13"	6" x 13"	6" x 13"	26.5" x 20"	12" x 17.5"	13" x 17.5"	12" x 17.5"
Warranty	1 Year	1 Year	1 Year	1 Year	1 Year	1 Year	1 Year	1 Year	1 Year
Daily Duty Cycle (pages)	5000	5000	3500	2500	1000	8500	6500	1000	1000
<b>Software Bundle:</b>									
Kofax VRS	YES	YES	YES	YES	YES	YES	YES	YES	NO
ScanSoft PaperPort	YES	YES	YES	YES	YES	NO	NO	YES	YES
ScanSoft OCR	OmniPage Pro	OmniPage Pro	OmniPage Pro	OmniPage Pro	OmniPage Pro	OmniPage Pro	OmniPage Pro	TextBridge Pro	TextBridge Pro
Pixel Translations QuickScan Demo	YES	YES	YES	YES	NO	YES	YES	YES	NO
ArcSoft Photolmpression	YES	YES	YES	YES	YES	NO	NO	YES	YES
NewSoft Presto! BizCard	NO	NO	NO	NO	YES	NO	NO	NO	NO

# Xerox Documate 152 Competitive Matrix



	Xerox DocuMate 152	Fujitsu ScanSnap S500
Scanning Speed S/D (ppm/ipm)		
B/W (200 dpi bitonal)	15 / 30	18 / 36
Color (150 dpi - 24 bit)	15 / 30	18 / 36
Scanner Type	Duplex Sheetfed	Duplex Sheetfed
Optical Resolution	600 dpi	600 dpi
ADF Capacity	50 @ 18#	50 @ 20#
Document Size (for ADF)		
Minimum	3.5 x 2"	3.5 x 2"
Maximum	8.5 x 14 "	8.5 x 14"
# of Buttons / Destinations	3 / 9	1
Drivers	OneTouch 4.0, TWAIN & WIA	TWAIN & ISIS not supported. ScanSnap Driver Only.
Kofax VRS	OneTouch with Kofax VRS technology integrated	No
Scan File Formats	PDF, Searchable PDF, TIFF, JPEG, BMP, DOC, XLS, HTML	PDF, Searchable PDF, JPEG
Bundled Software	ScanSoft PaperPort, ScanSoft OmniPagePro, Presto! BizCard 5, X1 Search Client, One Touch 4.0	Acrobat Standard, ABBYY FineReader, CardMinder 3.0, ScanSnap Organizer 3.0, ScanSnap Manager 4.0
Duty Cycle	1000 pages/day	750 pages/day
Warranty	1 Year	1 Year

Data is accurate as of publication date. Pricing and specifications are subject to change without notice.

# Xerox DocuMate 252 - 262 Competitive Matrix

April 20, 2007



Xerox DocuMate 252

Xerox DocuMate 262

Fujitsu fi-5120C

Canon 2580C

Kodak i40

Kodak i1220

HP 7800

BB&H Sidekick 1200

	Xerox DocuMate 252	Xerox DocuMate 262	Fujitsu fi-5120C	Canon 2580C	Kodak i40	Kodak i1220	HP 7800	BB&H Sidekick 1200
List Price	\$895	\$1,195	\$1,195	\$1,095	\$1,195	\$1,199	\$799	\$1,195
Scanner Type	Dual CCD	Dual CCD	Dual CCD	Dual CDD	Dual CCD	Dual CCD	Dual CCD	Dual CCD
Scanning Speed S/D (ppm/ipm)								
B/W (200 dpi bitonal)	25 / 50	33 / 66	25 / 50	25 / 50	25 / 50	30 / 60	25 / 50	23 / 42
Color (150 dpi - 24 bit)	24 / 40	33 / 42	30 / 60	13 / 18	25 / 40	30 / 60	25 / 50	10 / 18
OneTouch Software	Yes	Yes	No	No	No	No	No	No
Kofax VRS Certified	Yes	Yes	Yes	Yes	Yes	No	Yes	Yes
Kofax VRS Bundled	Yes	Yes	Yes	No	No	No	Yes	Yes
ADF Capacity (18# paper)	50	50	50	50	50	50 @ 20#	50	120
Document Size (for ADF)								
Minimum	2" x 3.5"	2" x 3.5"	2.1" x 2.9"	2.1" x 2.8"	2" x 3.5"	2" x 2.5"	n/a	2.0" x 2.8"
Maximum	8.5" x 14"	8.5" x 14"	8.5" x 14"	8.5" x 14"	8.5" x 14"	8.5" x 34"	8.5" x 14"	8.5" x 14"
Scans ID Cards	No	No	Yes	Yes	Yes (option)	Yes	Yes	No
Optical Resolution	600 dpi	600 dpi	600 dpi	600 dpi	600 dpi	600 dpi	1200 dpi	600 dpi
Bit Depth Color/Gray	48	48	48	24	48	48	48	24
Footprint size	6" x 13"	6" x 13"	6.2" x 11.9"	6.6" x 12"	6" x 13"	6.3" x 13"	12.6" x 19.7"	9.5" x 14"
Interfaces	USB 2.0	USB 2.0	USB 2.0 / Ultra SCSI	USB 2.0	USB 2.0	USB 2.0	USB 2.0	USB 2.0 / SCSI-3
Drivers	TWAIN, ISIS, WIA	TWAIN, ISIS, WIA	TWAIN, ISIS, WIA	TWAIN, ISIS, WIA	TWAIN, ISIS, WIA	TWAIN, ISIS, WIA	TWAIN, ISIS, WIA	TWAIN, ISIS, WIA
Duty Cycle	3500	5000	2000	750	1000	1,500	1,000	4000
Warranty	1 Year	1 Year	1 Year	1 Year	1 Year	1 Year	1 Year	1 Year

Data is accurate as of publication date. Pricing and specifications are subject to change without notice.

# Xerox DocuMate 272 Competitive Matrix

December 6, 2007



Xerox DocuMate 272

Fujitsu fi-5120C

Kodak i1220

HP 7800

	Xerox DocuMate 272	Fujitsu fi-5120C	Kodak i1220	HP 7800
List Price	\$1,295	\$1,195	\$1,199	\$799
Scanner Type	Dual CCD	Dual CCD	Dual CCD	Dual CCD
Scanning Speed S/D (ppm/ipm)				
B/W (200 dpi bitonal)	33 / 66	25 / 50	30 / 60	25 / 50
Color (150 dpi - 24 bit)	33 / 42	30 / 60	30 / 60	25 / 50
OneTouch Software	Yes	No	No	No
Kofax VRS Certified	Yes	Yes	No	Yes
Kofax VRS Bundled	Yes	Yes	No	Yes
ADF Capacity (18# paper)	50	50	50 @ 20#	50
Document Size (for ADF)				
Minimum	2" x 3.5"	2.1" x 2.9"	2" x 2.5"	n/a
Maximum	8.5" x 14"	8.5" x 14"	8.5" x 34"	8.5" x 14"
Scans ID Cards	Yes	Yes	Yes	Yes
Optical Resolution	600 dpi	600 dpi	600 dpi	1200 dpi
Bit Depth Color/Gray	48	48	48	48
Footprint size	6" x 13"	6.2" x 11.9"	6.3" x 13"	12.6" x 19.7"
Interfaces	USB 2.0	USB 2.0 / Ultra SCSI	USB 2.0	USB 2.0
Drivers	TWAIN, ISIS, WIA	TWAIN, ISIS, WIA	TWAIN, ISIS, WIA	TWAIN, ISIS, WIA
Duty Cycle	5000	2000	1,500	1,000
Warranty	1 Year	1 Year	1 Year	1 Year

Data is accurate as of publication date. Pricing and specifications are subject to change without notice.

# Xerox DocuMate 632 Competitive Matrix

April 20, 2007



	Xerox DocuMate 632	Fujitsu fi-5220C	Fujitsu fi-4340C	HP ScanJet 8390	Canon DR2580C	Kodak i1320	Kodak i65
List Price	\$1,995	\$1,995	\$4,995	\$1,499	\$1,795*	\$2,890 w/FB	\$2,200
Scanner Type	Duplex ADF w/Flatbed	Duplex ADF w/Flatbed	Duplex ADF w/Flatbed	Duplex ADF w/Flatbed	Duplex ADF w/opt FB	Duplex ADF w/opt FB	Duplex ADF w/Flatbed
Scanning Speed S/D (ppm/ipm)							
B/W (200 dpi bitonal)	40 / 80	25 / 50	40 / 80	35/70	25 / 50	60 / 120	36 / 72
Grayscale (200 dpi)	n/a	n/a	n/a	n/a	25 / 50	60 / 120	32 / 64
Color (150 dpi - 24 bit)	40 / 60	25 / 50	34 / 48	n/a	13 / 26	30 / 60	25 / 50
OneTouch Destinations	99	n/a	n/a	4	0	multiple	0
ADF Capacity	100 @ 16#	50 @ 20#	100 @ 20#	100 @ 20#	50 @ 20#	50 @ 20#	75 @ 16#
Document Size (for ADF)							
Minimum	4.6 x 5.6"	2.1 x 2.9"	2.1 x 2.9 "	A5 5.5 x 5.5	2.1 x 2.75	2.0 x 2.5	3.7 x 5.5"
Maximum	8.5 x 14 "	8.5 x 11.4	8.5 x 14 "	Legal 8.5 x 14	8.5 x 13.9"	8.5 x 34"	8.5 x 34"
Flatbed Max Document Size	8.5 x 14.5"	8.5 x 11.4"	8.5 x 11.4"	8.5 x 14	Unknown	Optional	8.5 x 11.7"
Paper Thickness	14-28#	14-34#	14-34#	n/a	14-32#	9-110#	16 to 28#
Optical Resolution	600 x 1200 dpi	600	600	4800 dpi	600	600	600 dpi
Bit Depth Color/Gray	48 / 16 bit internal	24 / 8 bit	24 / 8 bit	48 / 16 internal	24 / 8 bit	48 / 16	48 / 8 bit
Interfaces	USB 2.0	Ultra SCSI, USB 2.0	SCSI-2	USB 2.0	USB 2.0	USB 2.0	SCSI-2 & USB2 (incl card)
Drivers	TWAIN & ISIS	TWAIN & ISIS	TWAIN & ISIS	TWAIN & ISIS	TWAIN & ISIS	TWAIN & ISIS	TWAIN & ISIS
Bundled Software	Kofax VRS, OmniPage Pro, One Touch 4.0, Quickscan	Acrobat Standard, ScandAll 21, QuickScan, Kofax VRS	Acrobat Standard, ScandAll 2.1, VRS, Capio (Demo)	VRS, I.R.I.S Pro, QuickScan Demo, PhotoSmart, PhotoElemnts, PaperPort, Presto! Page Manager	Acrobat 7.0, CapturePerfect	Kodak Capture Software, Lite; Nuance ScanSoft OmniPage and PaperPort	Kodak Capture Lite, READIRIS Pro, Capio (Demo), QuickScan Pro (Demo)
Windows OS Support	2000/Me/XP	98/2000/Me/NT/XP	98/2000Pro/NT/XP	98/2000/Me/XP Mac OS X	n/a	2000 / XP	98SE/ME/2000/XP
Duty Cycle	6500 pages/day	2000 pages per day	3000 pages/day	1000 pages/day	700 pages/day	3000 pages/day	1500 pages / day
Warranty	1 Year	1 Year	3 month on site	1 year	n/a	1 Year	One Year Depot

Data is accurate as of publication date. Pricing and specifications are subject to change without notice.

# Xerox DocuMate 752 Competitive Matrix

December 10, 2006



	Xerox DocuMate 752	Fujitsu 5750C	Kodak i260	Canon DR-7080 C	BB&H Trüper 3200	Ricoh IS760D
List Price	\$4,995	\$7,995	\$6,800	\$7,995	\$8,995	\$6,795
Scanner Type	Duplex ADF w/Flatbed	Duplex ADF w/Flatbed	Duplex ADF w/ Optionl Flatbed	Duplex ADF w/Flatbed	Duplex ADF w/Flatbed	Flatbed ADF
Scanning Speed S/D (ppm/ipm)						
B/W (200 dpi bitonal) Portrait	50/100	57/114	50 / 100 (landscape)	70/36	62/106	75 / 122
Grayscale (200 dpi) Portrait	50/80	57/114	50 / 100 (landscape)	70/36	62/106	n/a
Color (150 dpi - 24 bit) Portrait	33/50	57/114	67 / 134 (landscape)	70/36	61/106	40 / 62
ADF Capacity	120 @ 16#	200 @ 20#	150 @ 16#	100 @ 16#	200 @ 17#	200 @ 11#
Document Size (for ADF)						
Minimum	4" x 4.5"	2.1" x 2.9"	3.5" x 2.5"	5.5" x 5"	1.9" x 2.8"	2.76 x 3.6
Maximum	11.7" x 17"	11.7" x 17"	11.7" x 26"	12" x 17"	11.9" x 25"	12 x 80
Max Document (Flatbed)	11.7" x 17"	12" x 18"	??	8.5" x 11"	11.7" x 17"	12.2 x 17.3
Paper Thickness	14 - 28#	11 - 54#	14 - 32#	??	10 - 34#	11 - 22 #
Optical Resolution	600 Dpi	600 Dpi	300 Dpi	600 Dpi	600 Dpi	400
Bit Depth Color/Gray	48/24	24/8	24/8	24/8	24/8	24 / 8
Interfaces	USB 2.0	USB 2.0 / Ultra SCSI	Firewire	USB 2.0 / SCSI III	USB 2.0 / SCSI III	USB 2.0 / SCSI III
Drivers	TWAIN & ISIS & WIA	TWAIN & ISIS	TWAIN & ISIS	TWAIN & ISIS	TWAIN & ISIS	TWAIN & ISIS
Bundled Software	Kofax VRS, ScanSoft OmniPage, Quick Scan	Acrobat Standard, ScandAll	TWAIN and ISIS drivers; KODAK Capture Software, Lite	CapturePerfect 2.1	VRS, VCDemo, QuickScan Demo, HiZoom	QuickScan Pro, Ricoh ScanRouter Lite, Ricoh DesktopBinder
Windows OS Support	Windows 2000/XP	98/2000/NT/XP	98/Me/2000/XP	98/Me/2000/NT/XP	2000/XP	98/ME/2000/NT/XP/2003
Duty Cycle	8,500	8,000	5,000	6,000	10,000	8,000
Warranty	1 Year	3 months	1 Year	1 Year	1 Year	1 Year Depot

Data is accurate as of publication date. Pricing and specifications are subject to change without notice.